

NCC COMPLIANT AS5216 CONFORMING

SCREW ANCHOR HEXAGONAL HEAD

Range 6mm-12mm

Zinc Plated
Dry, internal applications

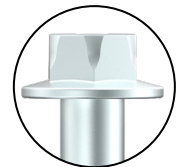
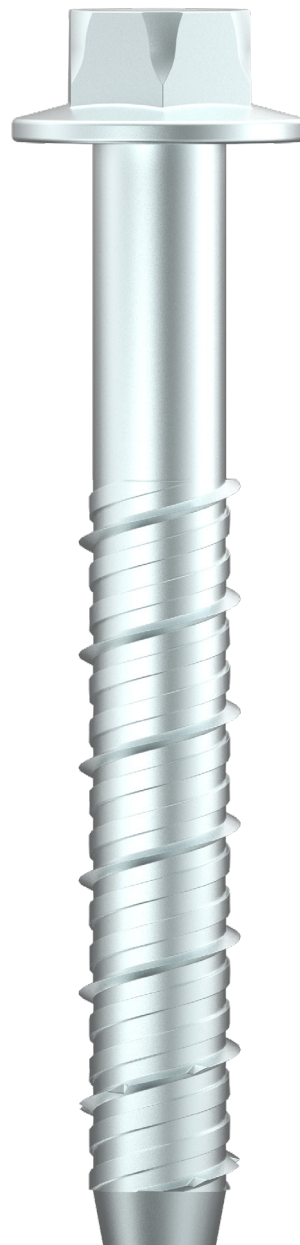
FEATURES & BENEFITS

- Ideal for safety critical & fire rated applications.
- Intended working life of 50 years.
- High tensile single piece anchor, cuts thread into concrete.
- ETA rating - from minimum Option 1 up to Seismic C2*.
- Fire rating to 120 minutes for all anchor sizes.
- Ideal for close to edge & close anchor spacing applications.

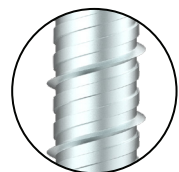
APPLICATIONS/TRADES

- Timber bottom plate hold down.
- Warehouse racking.
- Hand rails.
- Steel framing.
- Machinery hold down.

COMPLIANCE



High tensile steel for superior strength



Triple Hi-Lo thread for improved tensile performance



Tapered tip for simpler installation



AS5216



* Refer to Range table for line specific approval levels

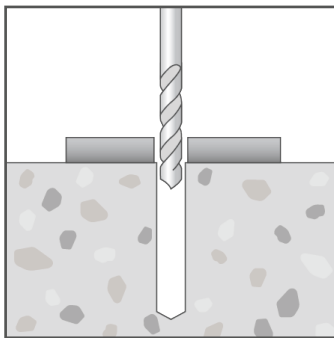
SCREW ANCHOR HEXAGONAL HEAD NCC COMPLIANT | AS5216 CONFORMING

RANGE

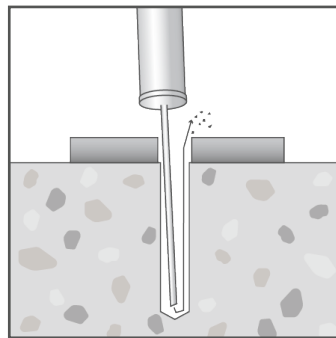
SAFETY Code	Pack Qty	ETA Cert'n level	Anchor length (mm)	Drill hole Ø (mm)	Drill hole depth** (mm) @ t _{fix, max}	Minimum concrete thickness** (mm)	Maximum fixture thickness** (mm)	Fixture clearance hole Ø (mm)
			l _t	d _o	h ₁	h _{min}	t _{fix, max}	d _f
ASBMZ06045ETA	100	Seismic C1	45	6	50	100	5	9
ASBMZ06060ETA	100	Seismic C1	60				20	
ASBMZ06080ETA	100	Seismic C1	80				40	
ASBMZ06100ETA	100	Seismic C1	100				45	
ASBMZ08055ETA	100	Option 1	55	8	60	100	5	12
ASBMZ08065ETA	100	Option 1*	65				15	
ASBMZ08075ETA	100	Option 1*	75				25	
ASBMZ08110ETA	100	Seismic C1 & C2	110				50	
ASBMZ10065ETA	50	Option 1	65	10	70	100	5	14
ASBMZ10075ETA	50	Option 1	75				15	
ASBMZ10100ETA	50	Option 1*	100				30	
ASBMZ10120ETA	50	Option 1*	120				50	
ASBMZ10140ETA	50	Seismic C1 & C2	140		100	130	55	
ASBMZ12090ETA	50	Option 1	90	12	90	120	15	16
ASBMZ12110ETA	50	Option 1*	110				35	
ASBMZ12150ETA	20	Seismic C1 & C2	150				120	

Note: * Seismic C1 & C2 ratings available for this anchor with increased embedment depth - contact Bremick for details
 ** For a fixture thickness (t_{fix}) that is less than the t_{fix,max} value tabled above:
 - increase both the drill hole depth (h₁) & concrete thickness (h_{min}) by (t_{fix,max} - t_{fix} actual)

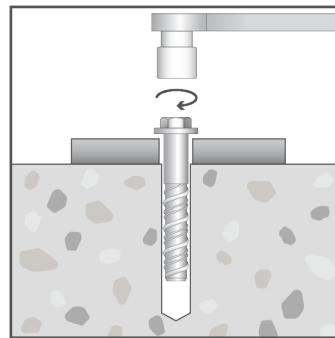
INSTALLATION



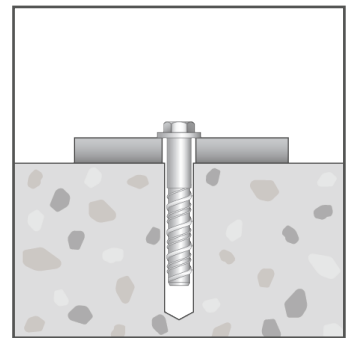
Drill hole through fixture into substrate to the specified diameter and depth



Clear hole of drilling debris.



Insert anchor into hole and screw in using spanner, socket or an impact wrench. Apply constant forward pressure when driving and tighten to the specified torque.



Use hand tools when removing the anchor. Do not remove with power tools if resetting the anchor.

SCREW ANCHOR HEXAGONAL HEAD NCC COMPLIANT | AS5216 CONFORMING

SAFETY INSTALL & PERFORMANCE INFORMATION

SAFETY Code	Anchor length (mm)	Maximum fixture thickness (mm)	Drill hole depth @ t _{fix, max} (mm)	Minimum embedment depth (mm)	Socket size AF (mm)	Installation torque (Nm)	Design Capacities	
							Uncracked concrete - tension (kN)	Uncracked concrete - shear (kN)
							N _{Rd,ucr}	V _{Rd,ucr}
	I _t	t _{fix, max}	h ₁	h _{nom}	SW	T _{inst}		
ASBMZ06045ETA	45	5	50	40	10	15	3.8	6.2
ASBMZ06060ETA	60	20					3.8	6.2
ASBMZ06080ETA	80	40					3.8	6.2
ASBMZ06100ETA	100	45	65	55	13	25	6.0	6.0
ASBMZ08055ETA	55	5	60	50			7.4	10.7
ASBMZ08065ETA	65	15					7.4	10.7
ASBMZ08075ETA	75	25			7.4	10.7		
ASBMZ08110ETA	110	50	70	60	15	50	10.0	12.0
ASBMZ10065ETA	65	5	70	60			9.7	11.6
ASBMZ10075ETA	75	15					9.7	11.6
ASBMZ10100ETA	100	30			85	70	12.4	14.9
ASBMZ10120ETA	120	50	12.4	14.9				
ASBMZ10140ETA	140	55	100	85			21.0	20.4
ASBMZ12090ETA	90	15	90	75	16	60	14.3	25.8
ASBMZ12110ETA	110	35					14.3	25.8
ASBMZ12150ETA	150	45					120	105

Note: Concrete cylinder compressive strength = 32MPa.
 Single anchor capacity - no nearby edge, minimum recommended concrete thickness.
 For combined load cases (tension & shear) - must also comply with $(N^* / N_{Rd}) + (V^* / V_{Rd}) \leq 1.2$.

Important Disclaimer: SAFETY performance information contained herein is based on ETA certificate data and AS5216:2021 inputs as appropriate. Capacity information is limited to very simple load case configurations and is provided to enable a relative comparison within and across SAFETY ranges. The design of an anchoring solution for a particular application should be conducted by an appropriately qualified design professional.