

NCC COMPLIANT AS5216 CONFORMING

SPLICE ANCHOR FLAT HEAD

Range 6mm

Zinc Plated
Dry, internal applications

FEATURES & BENEFITS

- Multiple fixings in non structural applications.
- Tamper resistant once set.
- Low profile head.
- ETA rating - ETAG001, Part 6.
- Fire rating to 120 minutes.

APPLICATIONS/TRADES

- Hanger systems
- Suspended services - pipes, tracks
- Cable tray
- Battens

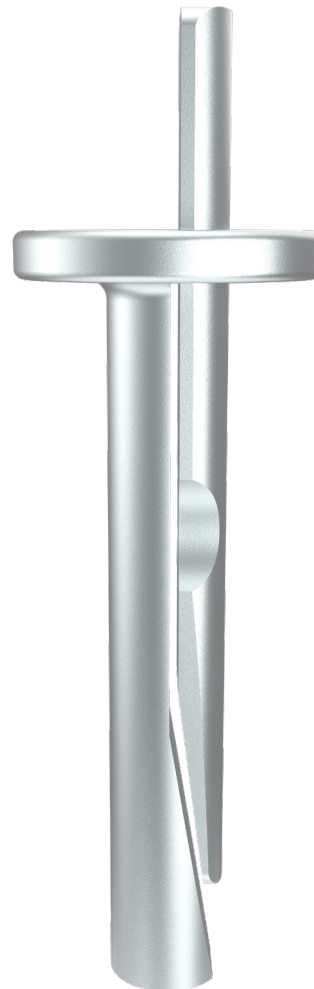
COMPLIANCE



AS5216



ETAG001
Part 6



Tamper resistant fixing prevents removal



Large flange firmly secures the fixture



Wedge mechanism expands when hammered



SPLICE ANCHOR FLAT HEAD

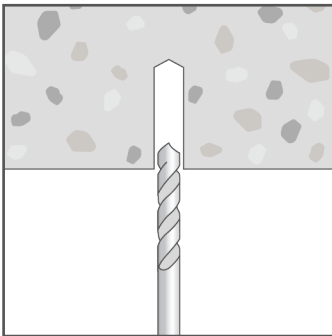
NCC COMPLIANT | AS5216 CONFORMING

RANGE

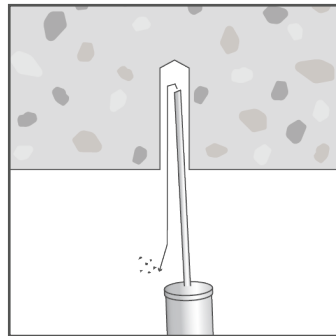
Product Code	Pack Qty	ETA Cert'n level	Anchor length (mm)	Drill hole Ø (mm)	Drill hole depth (mm) @ t _{fix, max}	Minimum concrete thickness (mm)	Maximum fixture thickness (mm)	Fixture clearance hole Ø (mm)
			l_t	d_o	h_1	h_{min}	$t_{fix, max}$	d_f
ASPMZ060352	100	ETAG001, Part 6	35	6	40	80	5	7
ASPMZ060652	100	ETAG001, Part 6	65	6	40	80	35	7

Note: For a fixture thickness (t_{fix}) that is less than the $t_{fix, max}$ value tabled above:
 - increase both the drill hole depth (h_1) & concrete thickness (h_{min}) by ($t_{fix, max} - t_{fix}$ actual)

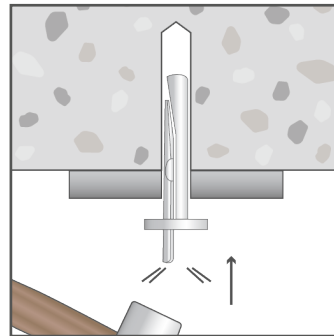
INSTALLATION



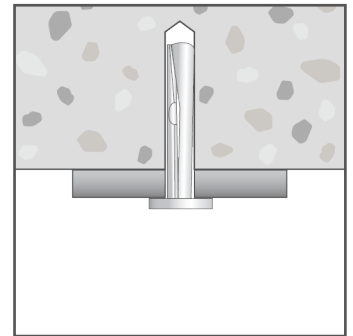
Drill hole into substrate to the specified diameter and depth



Clear hole of drilling debris.



Insert anchor through fixture into hole – drive the anchor until it is in firm contact with the fixture.



Drive the anchor pin home until it is flush with the large flanged head of the anchor.

SPLICE ANCHOR

FLAT HEAD

NCC COMPLIANT | AS5216 CONFORMING

PRODUCT INSTALL & PERFORMANCE INFORMATION

Product Code	Anchor length (mm)	Maximum fixture thickness (mm)	Drill hole depth @ $t_{fix, max}$ (mm)	Minimum concrete thickness (mm)	Design Capacity, (load in any direction) - Uncracked concrete (kN)
	l_t	$t_{fix, max}$	h_1	h_{min}	F_{Rd}
ASPMZ060352	35	5	40	80	1.3
ASPMZ060652	65	35	40	80	

Note: Concrete cylinder compressive strength $\geq 20\text{MPa}$
 Single anchor - no nearby edge, minimum recommended concrete thickness

Important Disclaimer: Product performance information contained herein is based on ETA certificate data and AS5216:2021 inputs as appropriate. Capacity information is limited to very simple load case configurations and is provided to enable a relative comparison within and across product ranges. The design of an anchoring solution for a particular application should be conducted by an appropriately qualified design professional.