

# NCC COMPLIANT AS5216 CONFORMING

## SCREW ANCHOR HEXAGONAL HEAD

Range 6mm-10mm

**Stainless Steel**  
External & marine applications

### FEATURES & BENEFITS

- Ideal for safety critical & fire rated applications.
- Intended working life of 50 years.
- High tensile single piece anchor, cuts thread into concrete.
- ETA rating - Option 1.
- Fire rating to 120 minutes for all anchor sizes.
- Ideal for close to edge & close anchor spacing applications.

### APPLICATIONS/TRADES

- Balustrading.
- Warehouse racking.
- Hand rails.
- Steel framing.
- Machinery hold down.

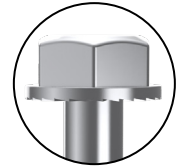
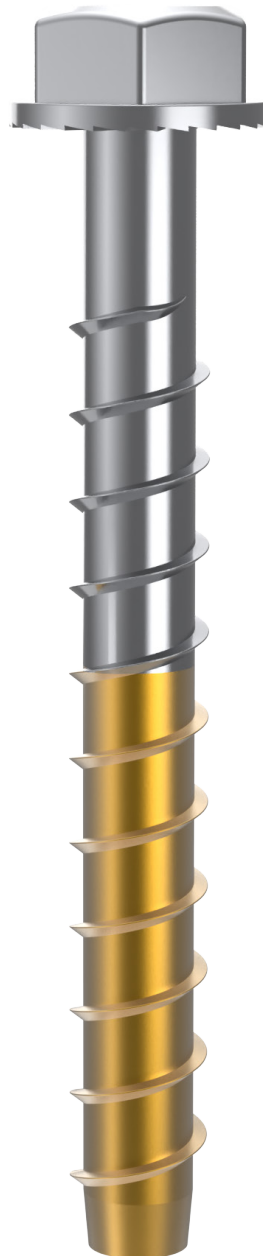
### COMPLIANCE



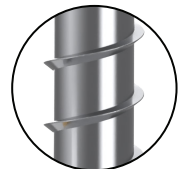
**AS5216**



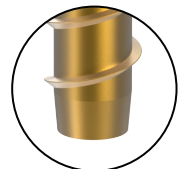
**OPTION 1**  
Cracked Concrete



Serrated under head for superior clamping of fixture



300 series Stainless Steel for ultimate corrosion protection



Tapered tip for simpler installation



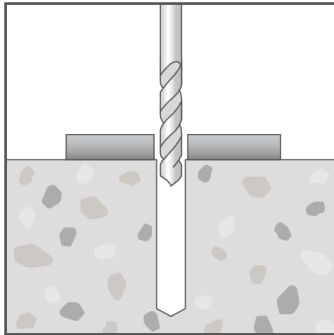
# SCREW ANCHOR HEXAGONAL HEAD NCC COMPLIANT | AS5216 CONFORMING

## RANGE

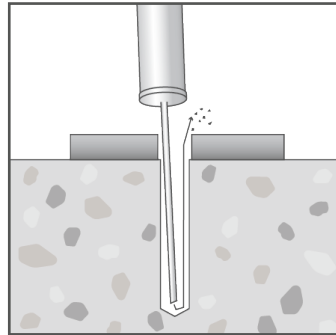
Product Code	Pack Qty	ETA Cert'n level	Anchor length (mm)	Drill hole Ø (mm)	Drill hole depth (mm) @ t <sub>fix, max</sub>	Minimum concrete thickness (mm)	Maximum fixture thickness (mm)	Fixture clearance hole Ø (mm)
			$l_t$	$d_o$	$h_1$	$h_{min}$	$t_{fix, max}$	$d_f$
ASBM606075ETA	50	Option 1	75	6	50	100	35	9
ASBM608070ETA	50	Option 1	70	8	60	100	20	12
ASBM608090ETA	50	Option 1	90				40	
ASBM610105ETA	20	Option 1	105	10	75	105	45	14
ASBM610120ETA	20	Option 1	120				60	

Note: For a fixture thickness ( $t_{fix}$ ) that is less than the ( $t_{fix, max}$ ) value tabled above:  
 - increase both the drill hole depth ( $h_1$ ) & concrete thickness ( $h_{min}$ ) by ( $t_{fix, max} - t_{fix}$  actual)

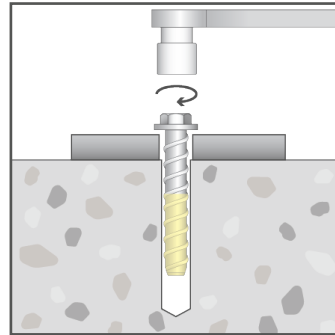
## INSTALLATION



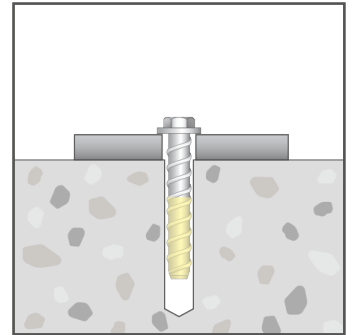
Drill hole through fixture into substrate to the specified diameter and depth.



Clear hole of drilling debris.



Insert anchor into hole and screw in using spanner, socket or an impact wrench. Apply constant forward pressure when driving and tighten to the specified torque.



Use hand tools when removing the anchor. Do not remove with power tools if resetting the anchor.

# SCREW ANCHOR HEXAGONAL HEAD NCC COMPLIANT | AS5216 CONFORMING

## PRODUCT INSTALL & PERFORMANCE INFORMATION

Product Code	Anchor length (mm)	Maximum fixture thickness (mm)	Drill hole depth @ t <sub>fix, max</sub> (mm)	Minimum concrete thickness (mm)	Socket size AF (mm)	Installation torque (Nm)	Design capacities	
							Uncracked concrete - tension (kN)	Uncracked concrete - shear (kN)
							N <sub>Rd</sub>	V <sub>Rd</sub>
	l <sub>t</sub>	t <sub>fix, max</sub>	h <sub>1</sub>	h <sub>min</sub>	SW	T <sub>inst</sub>		
ASBM606075ETA	75	35	50	100	10	15	3.9	7.4
ASBM608070ETA	70	20	60	100	13	25	7.8	13.0
ASBM608090ETA	90	40						
ASBM610105ETA	105	45	75	100	15	50	10.1	20.5
ASBM610120ETA	120	60						
ASBM612125ETA	125	50	90	120	16	60	14.7	32.2

Note: Concrete cylinder compressive strength = 32MPa.  
 Single anchor capacity - no nearby edge, minimum recommended concrete thickness.  
 For combined load cases (tension & shear) - must also comply with  $(N^* / N_{Rd}) + (V^* / V_{Rd}) \leq 1.2$ .

**Important Disclaimer:** Product performance information contained herein is based on ETA certificate data and AS5216:2021 inputs as appropriate. Capacity information is limited to very simple load case configurations and is provided to enable a relative comparison within and across product ranges. The design of an anchoring solution for a particular application should be conducted by an appropriately qualified design professional.